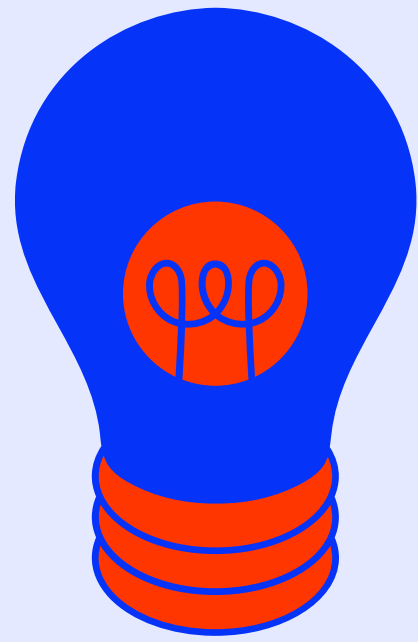


How To Make a Job Share Design GIF in Canva

www.paiger.co

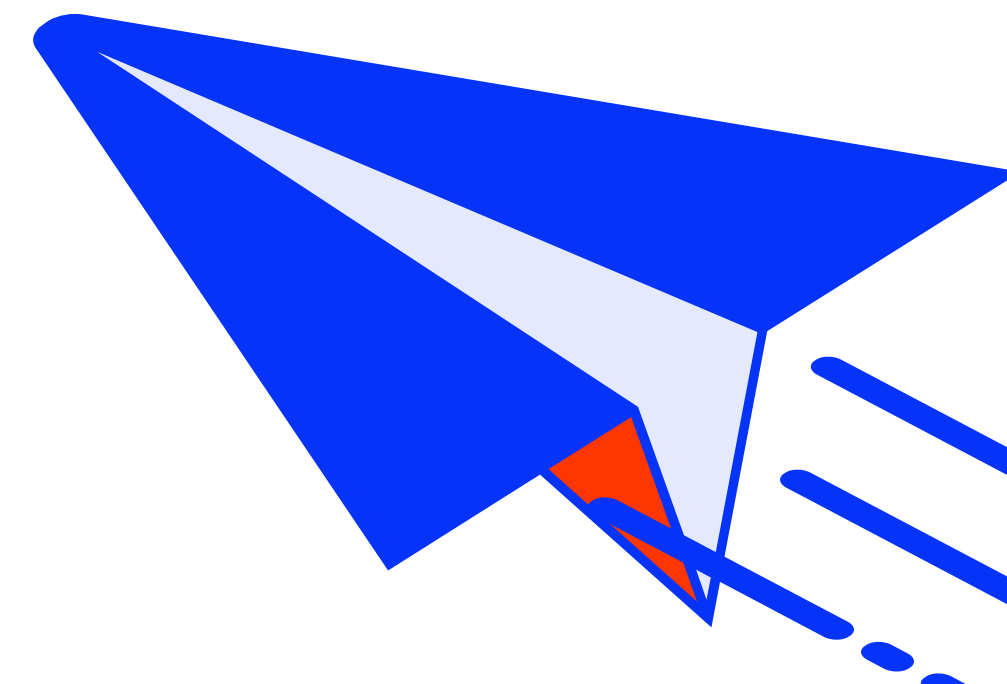
Paiger





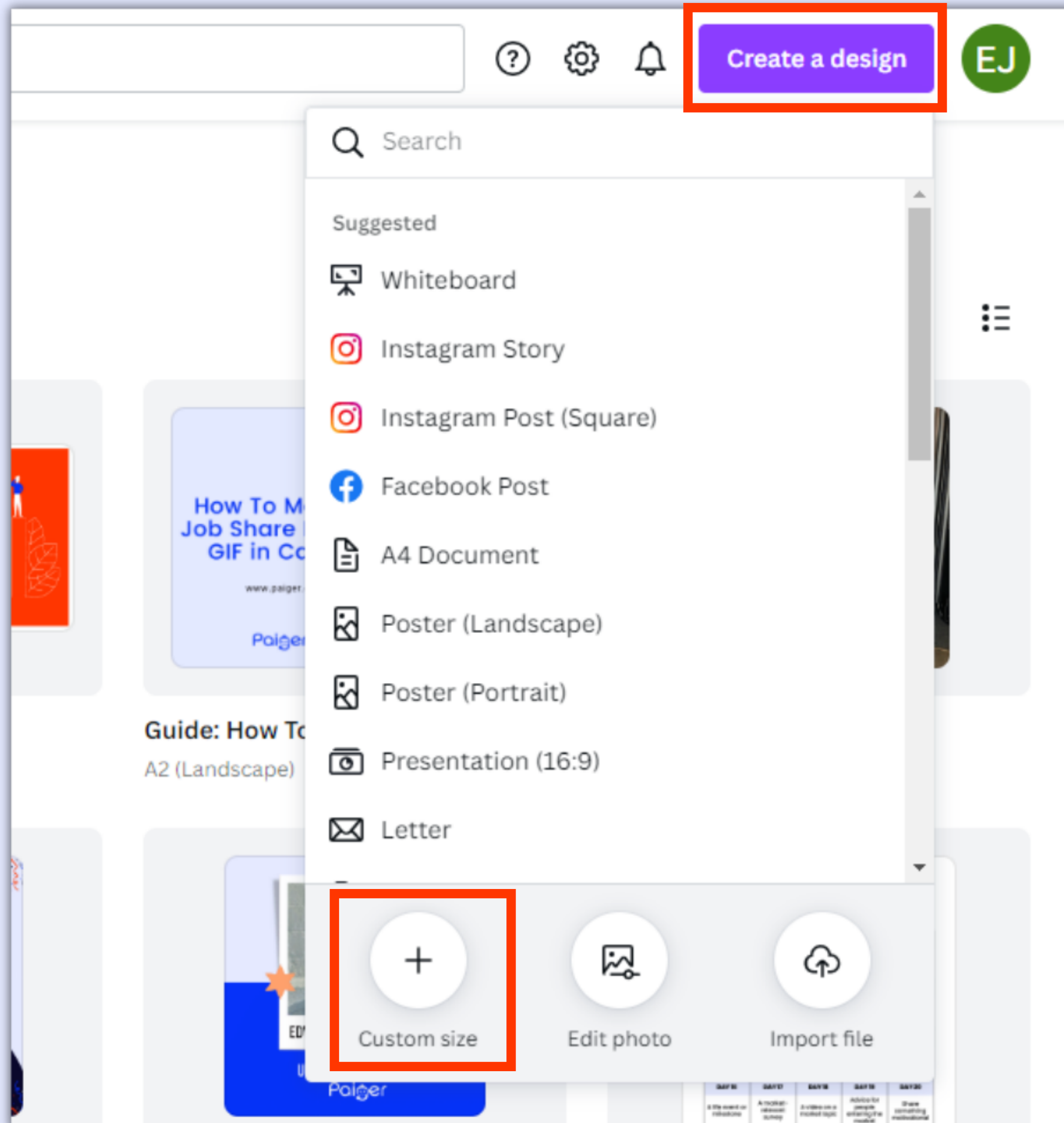
Job Share Design GIFs in Canva

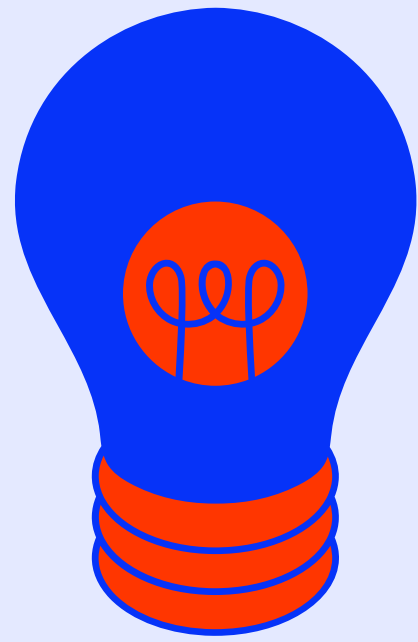
- GIF image dimensions must be 696 x 365 px
- GIF files cannot exceed 10mb and can be a maximum 100 frames
- This guide explains how to make GIFs from video and through animation
- GIFs can be made using the free and Pro versions of Canva. This guide explains how to use the free version of Canva
- Any templates, images, graphics, frames, or fonts with a Crown Icon can only be used with a Canva Pro account



Create your GIF canvas

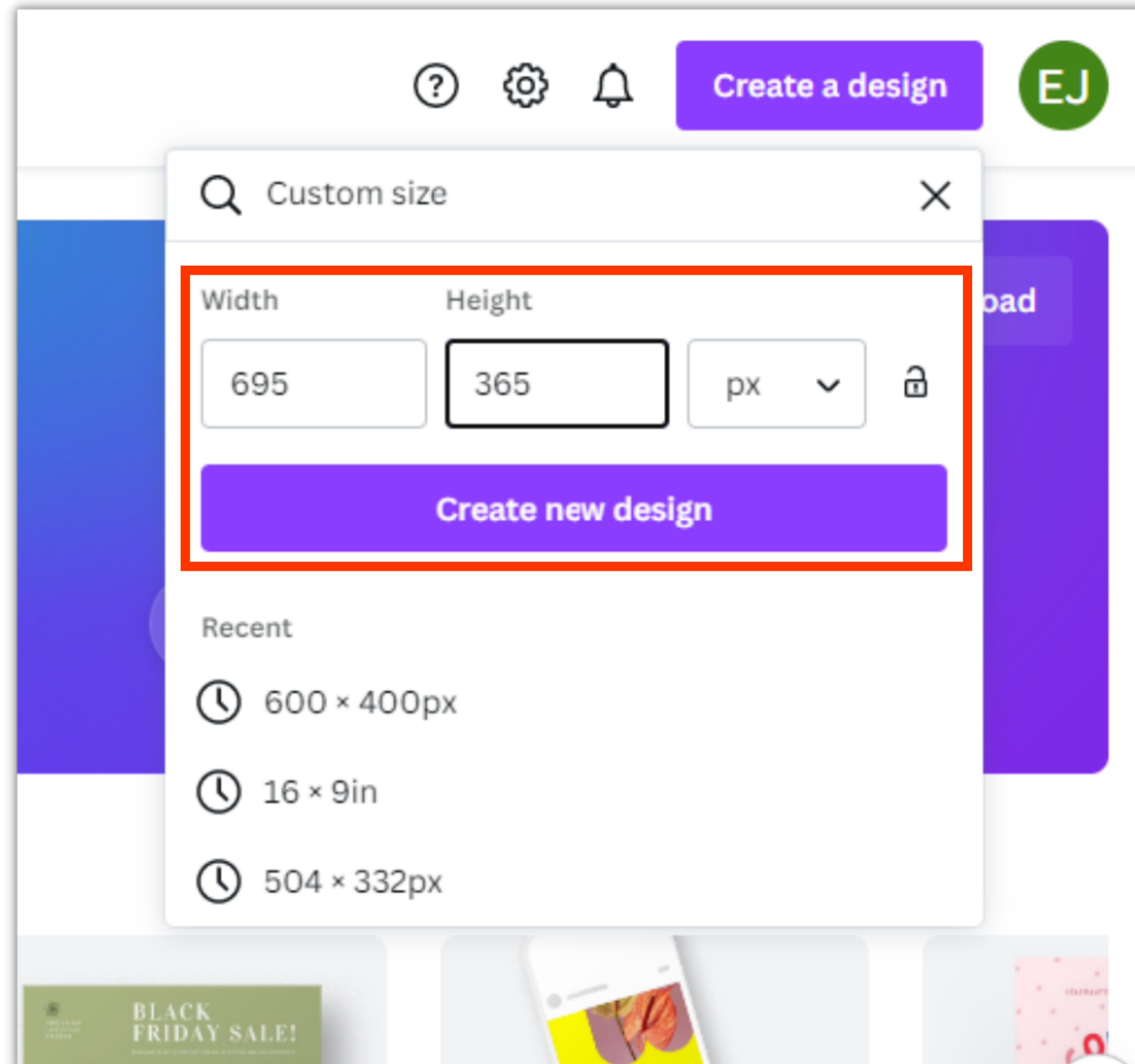
In Canva, click Create a Design and select Custom size





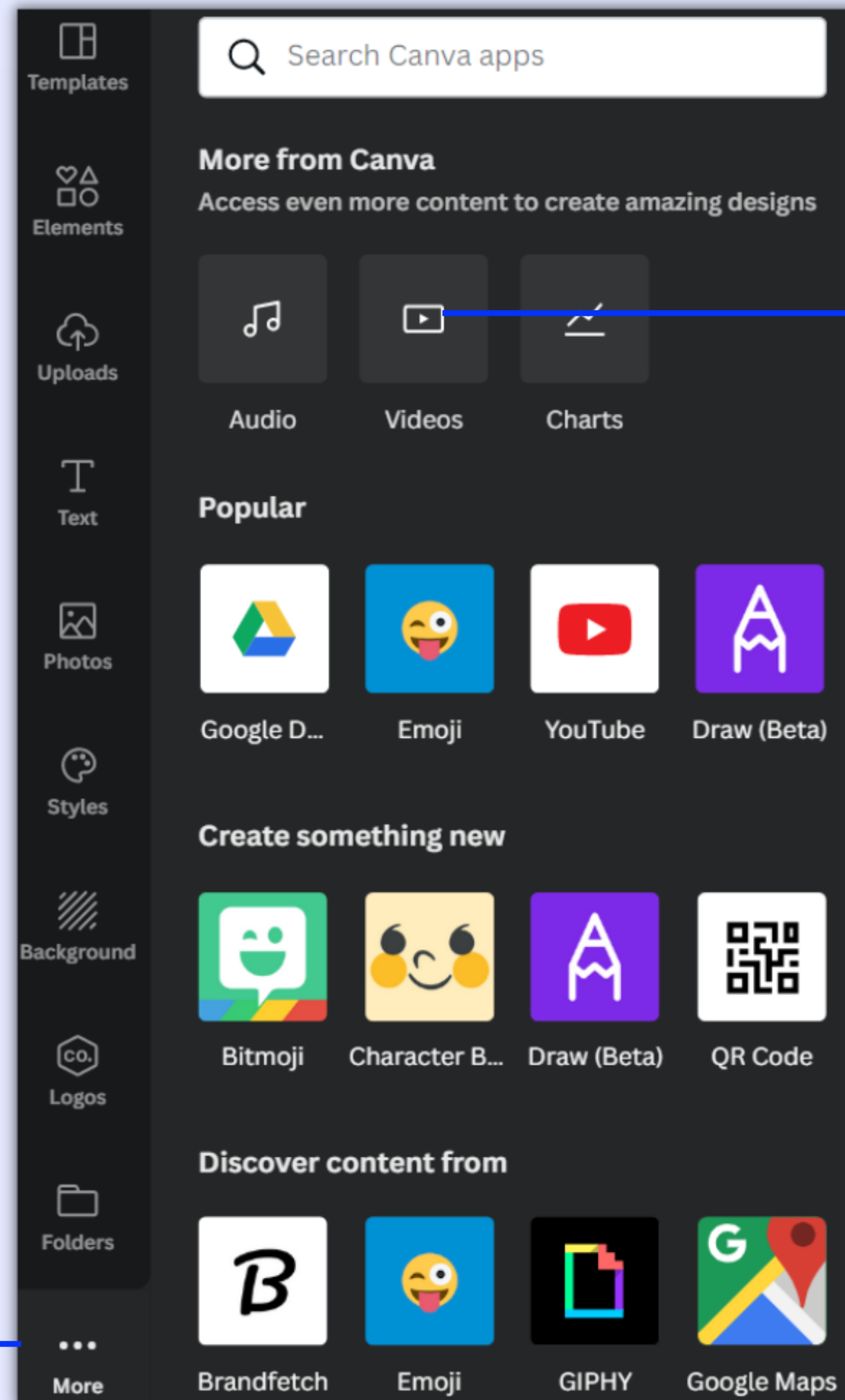
Create your GIF canvas

Input our GIF size and click Create new design



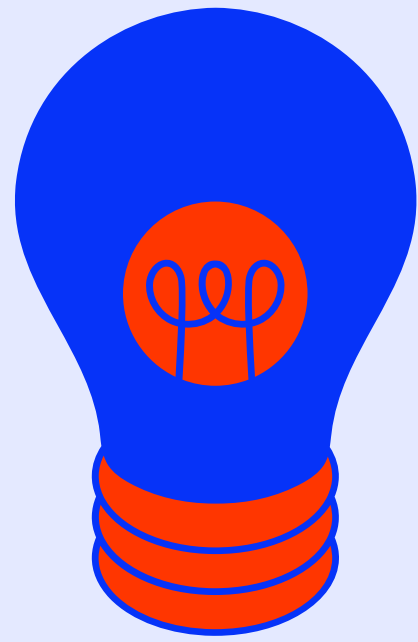
Create a GIF from video

At the bottom of the Canva side panel, click More and select Videos



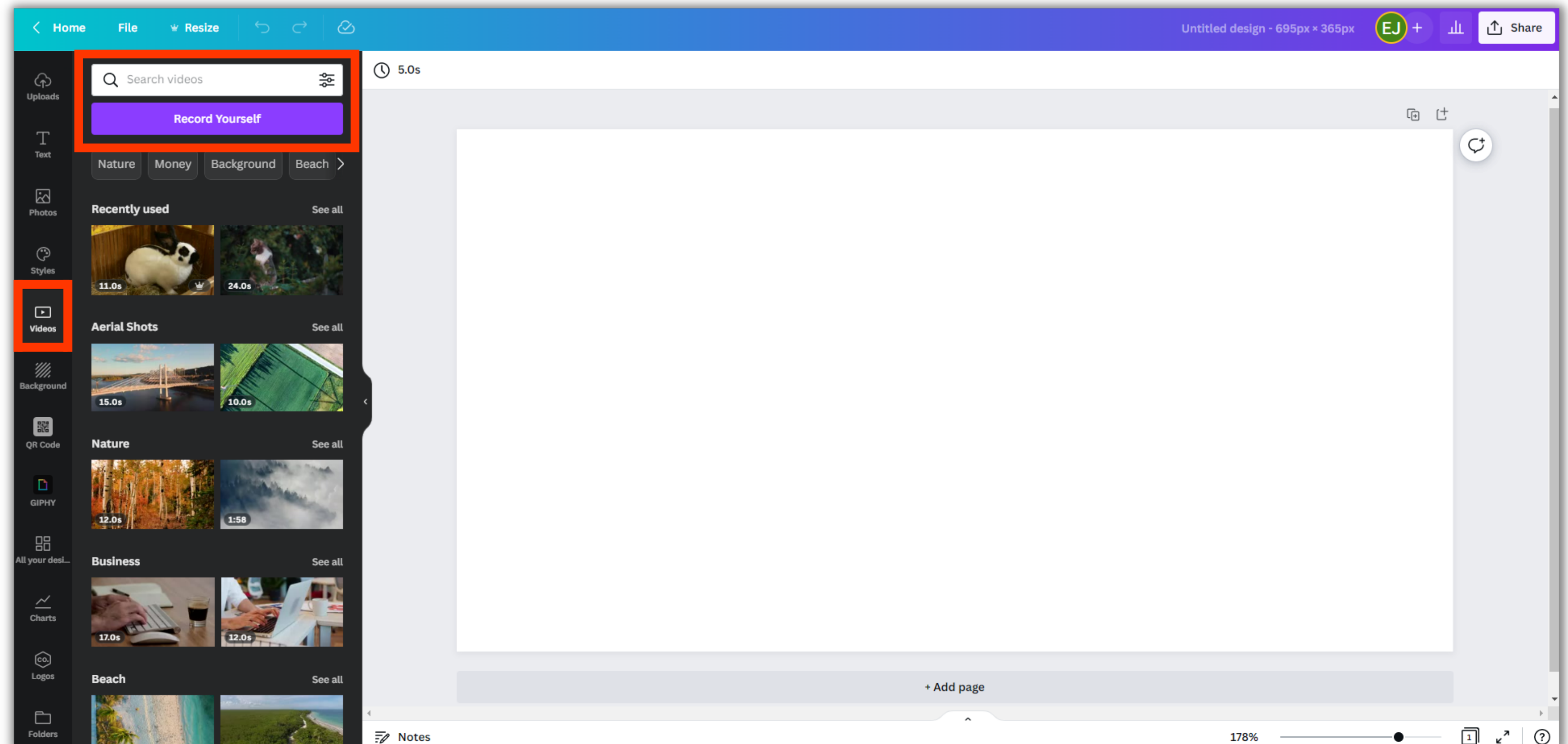
Selecting Videos will add the Videos tab to your Canva side panel

The More tab has extra Canva features, including Videos



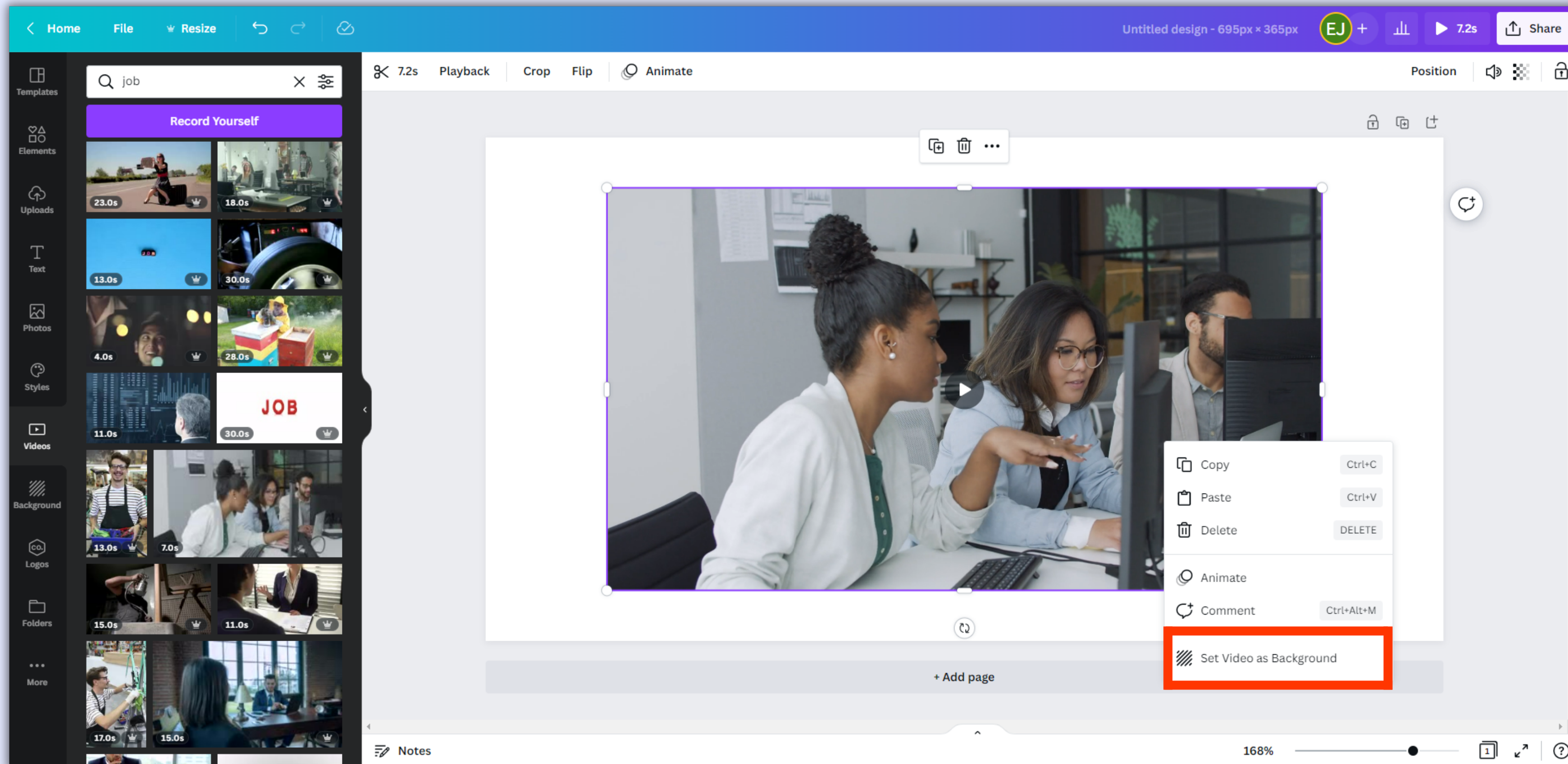
Create a GIF from video

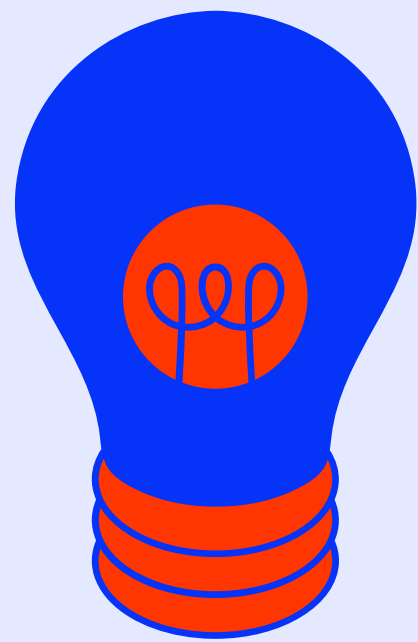
In the Video tab, search for something specific (e.g. animals, office, marketing) or browse Canva's different themes



Create a GIF from video

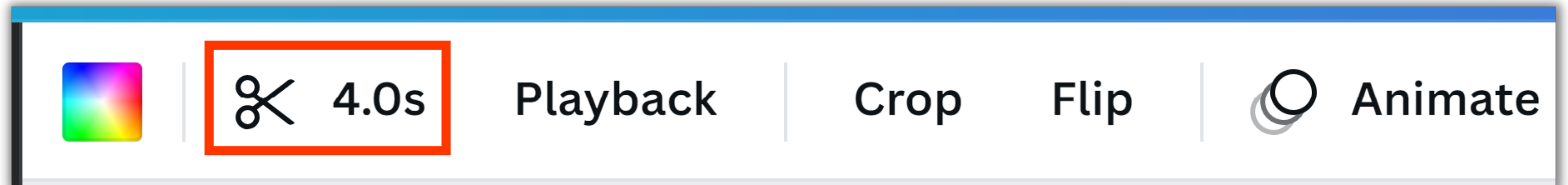
Once you have a video selected, click on the design to place it on your canvas. Right-click the video and select Set Video as Background



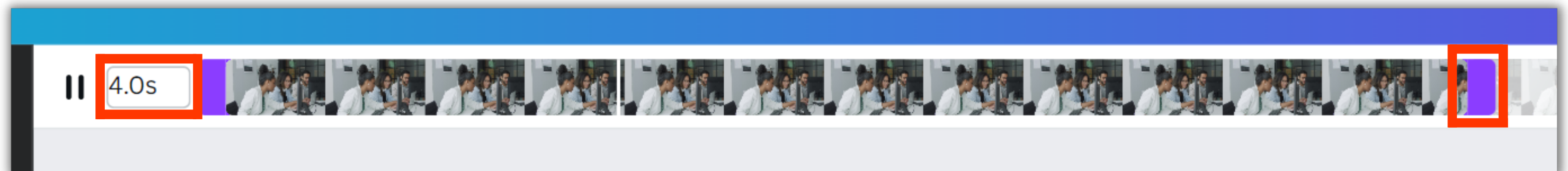


Create a GIF from video

Above your design, you can trim your video by using the snippet tool (scissor icon)



Either type your desired length into the text box on the left, or click and drag the purple edges of the video

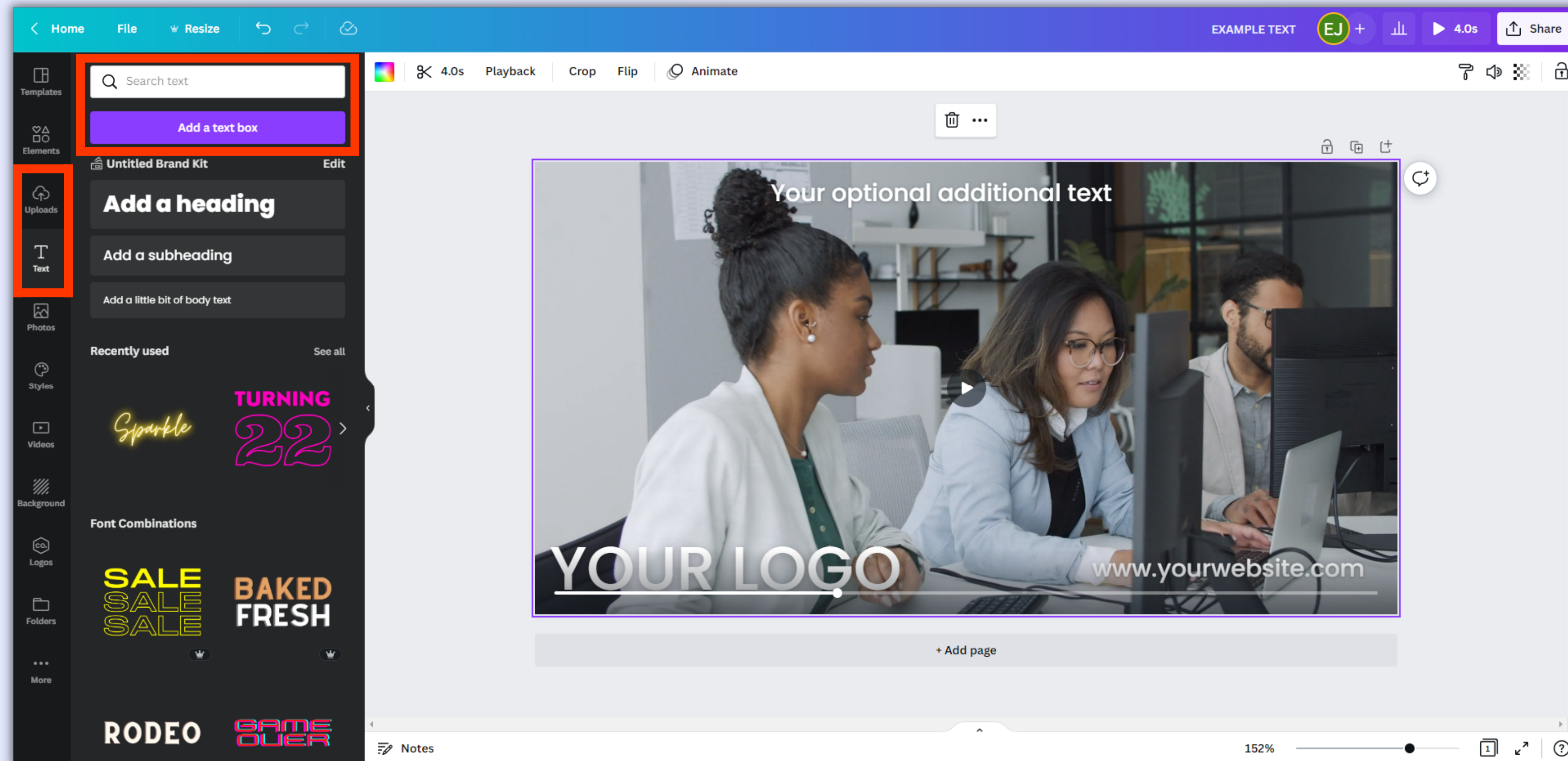


Aim for approximately 4 seconds, but double-check your GIF size doesn't exceed 10mb after downloading. If it does, go back and shorten the length of your video until it's within 10mb

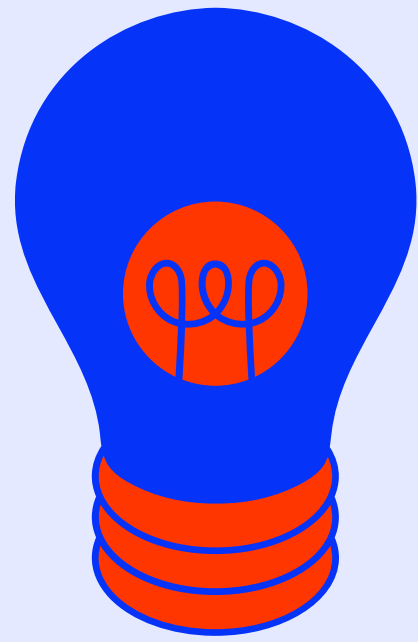
Create a GIF from video

Click on the Text tab on the Canva Side Panel, click Add a text box, and add additional information (e.g. a CTA, your website, a contact number)

Click on the Upload tab, upload a PNG image of your logo, and click on it to overlay your logo onto your Job Share Design



Make sure to leave room for your Job Title. Your job title will be automatically centred by default, unless you specify left or right alignment



Save and export your Job Share Design

Once you have finished your design, click Share and then click Download

MPLE TEXT EJ + [Bar chart icon] [Play icon] 5.0s [Share icon] Share

Share this design

Add people, groups, or teams

EJ +

Link sharing restricted

[Lock icon] Only people added [Can access]

Copy link

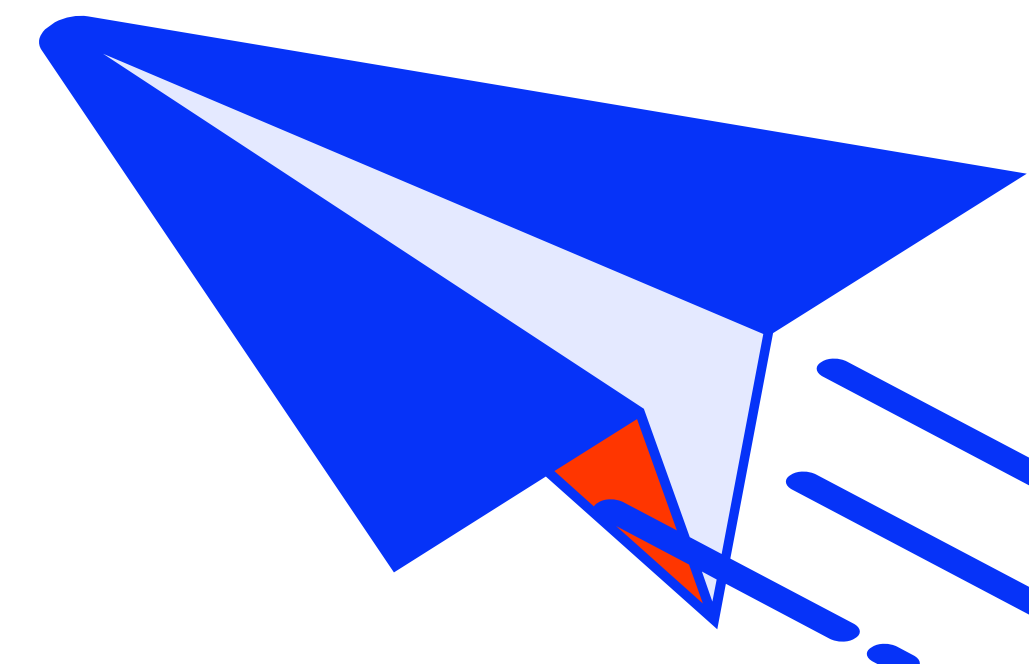
Template link Present Present and record View-only link

Download >

Share on social >

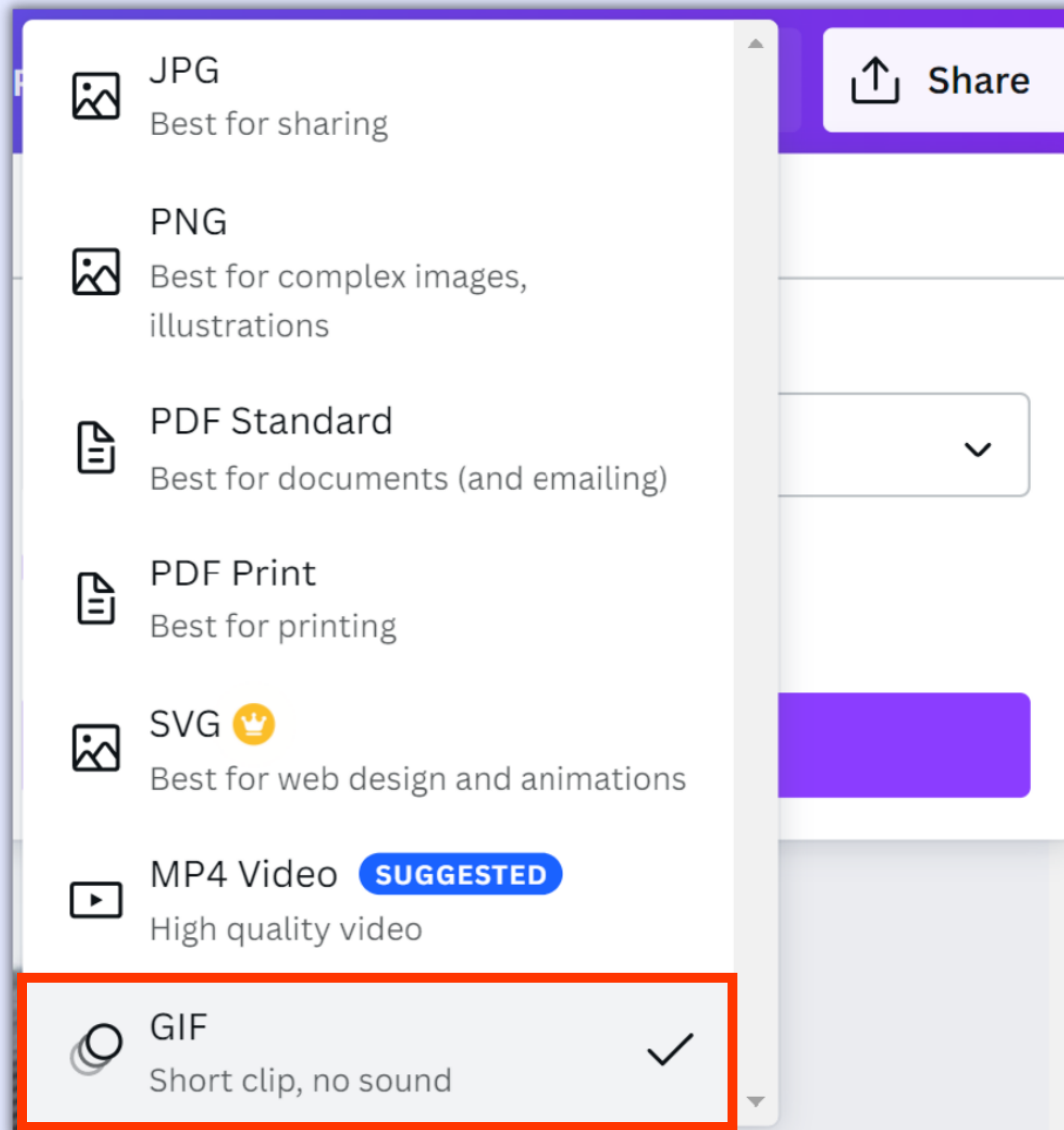
Print your design >

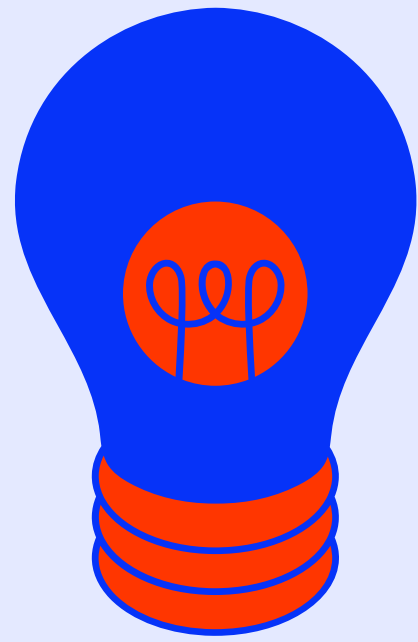
More >



Save and export your Job Share Design

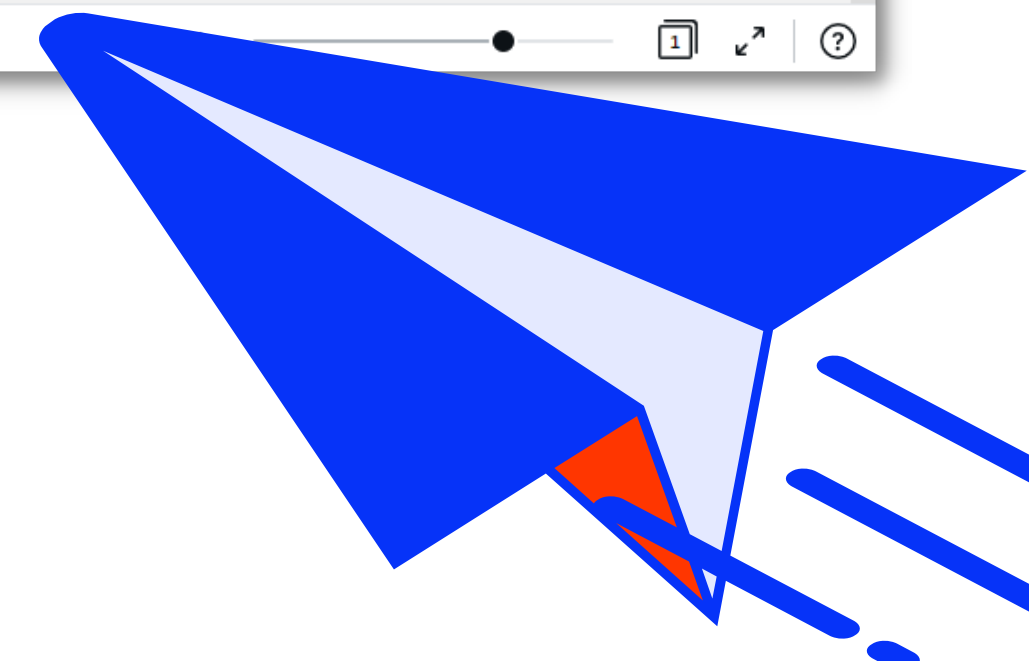
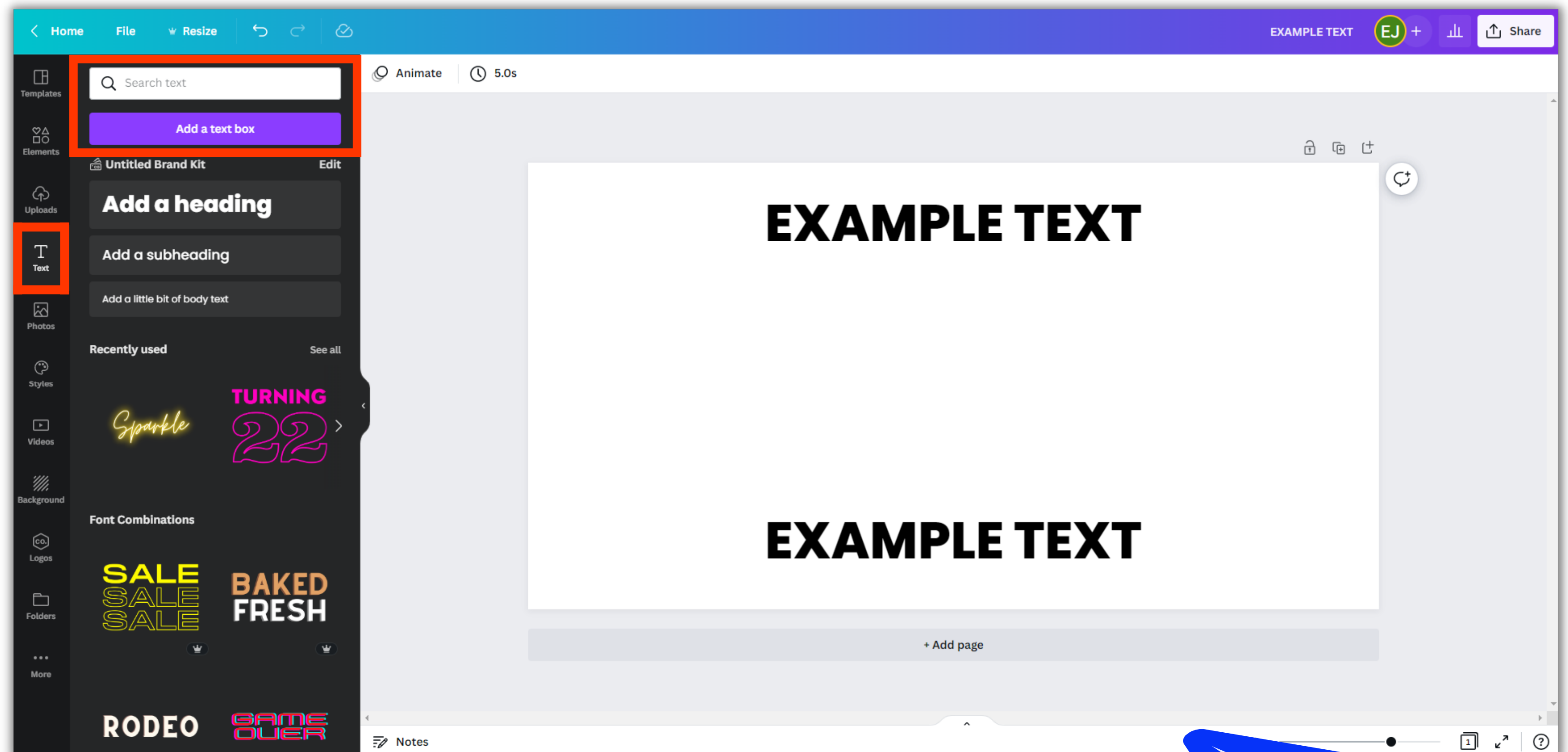
Click the File type drop-down, select GIF, then click Download





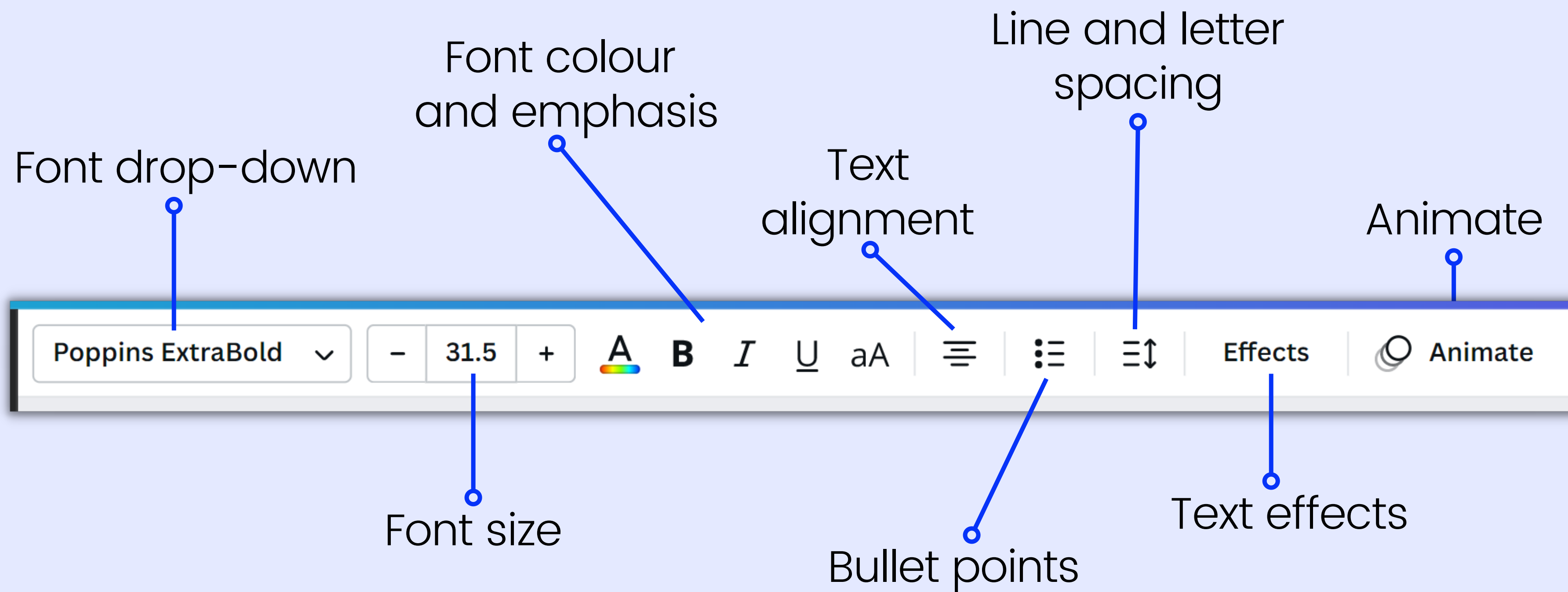
Create a GIF with animation

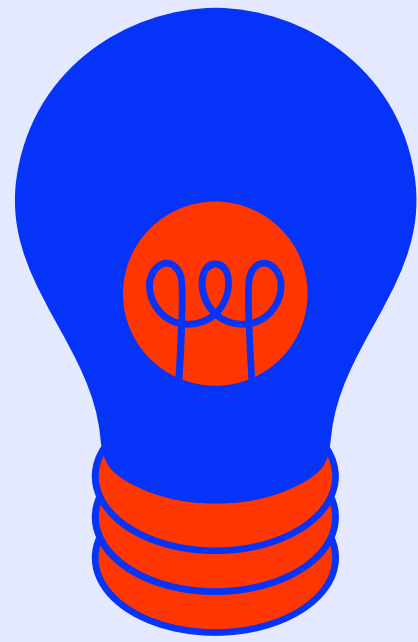
On the Text tab on the Canva Side Panel, click Add a textbox, and write your chosen text (e.g. we're hiring, your website, a CTA)



Create a GIF with animation

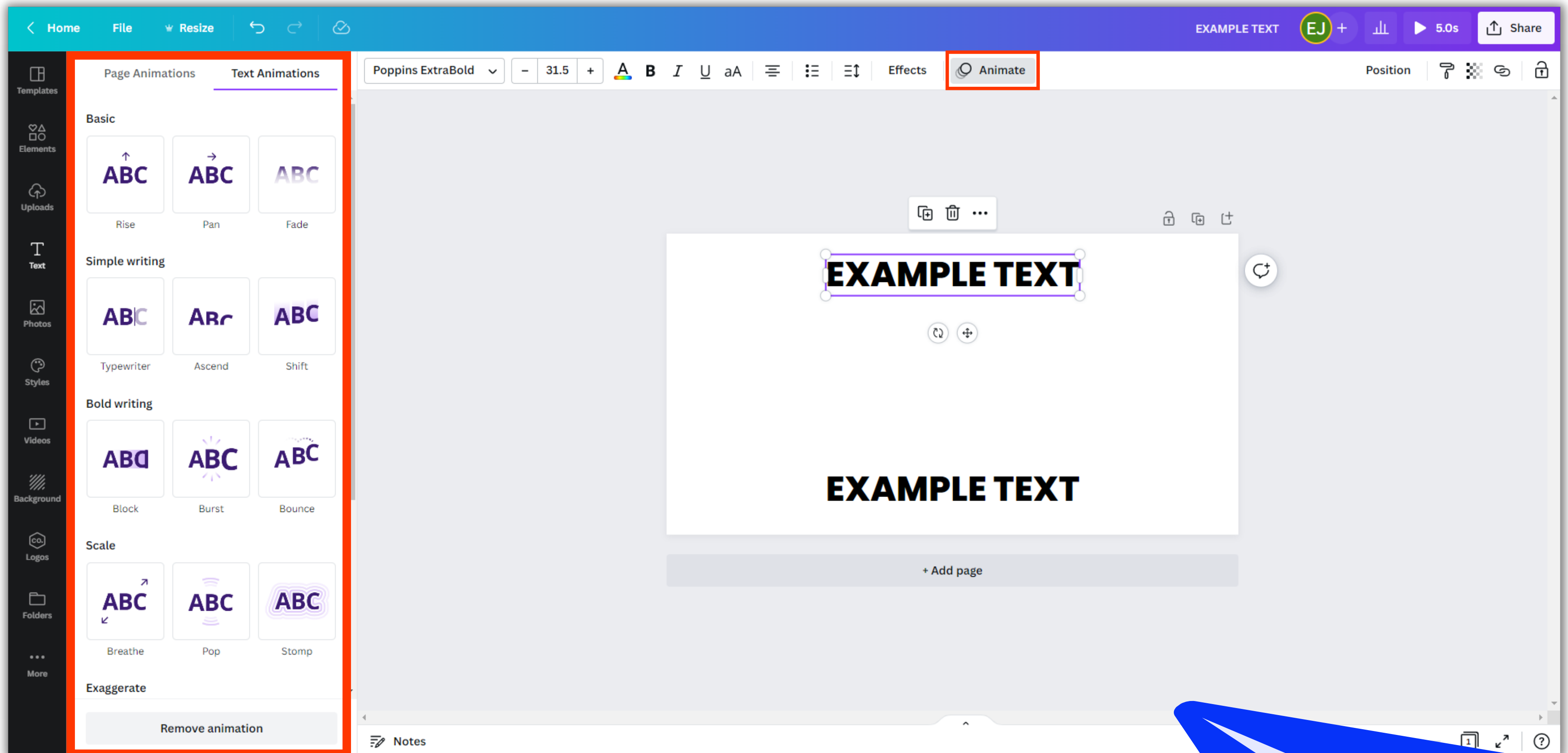
Select the text, customise it to your brand, then select Animate





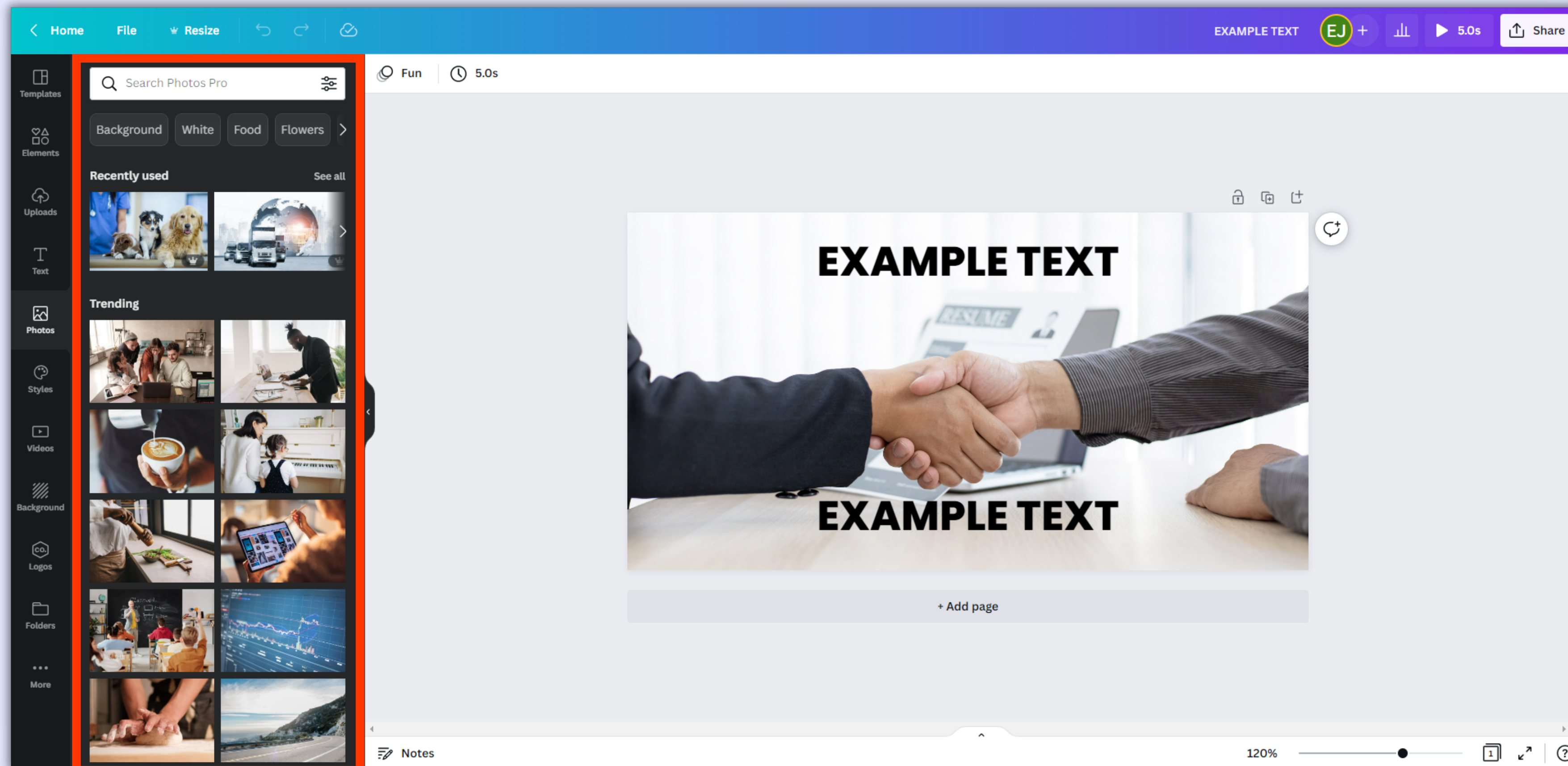
Create a GIF with animation

Under the Text Animations tab, choose an animation. You can hover over the animations before clicking on them to see a preview

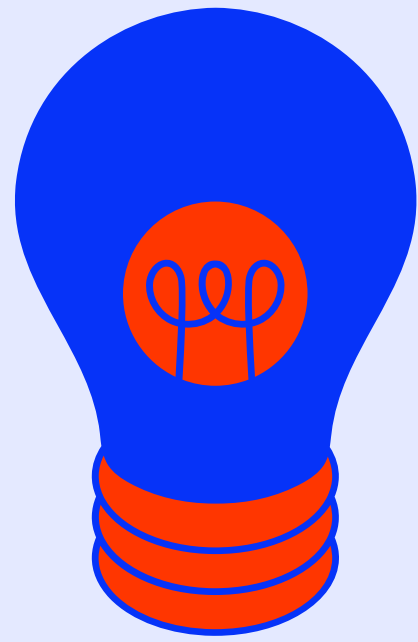


Create a GIF with animation

Add a background image with a free-to-use Canva image from the Photo tab or your own external image from your computer files in the Uploads tab



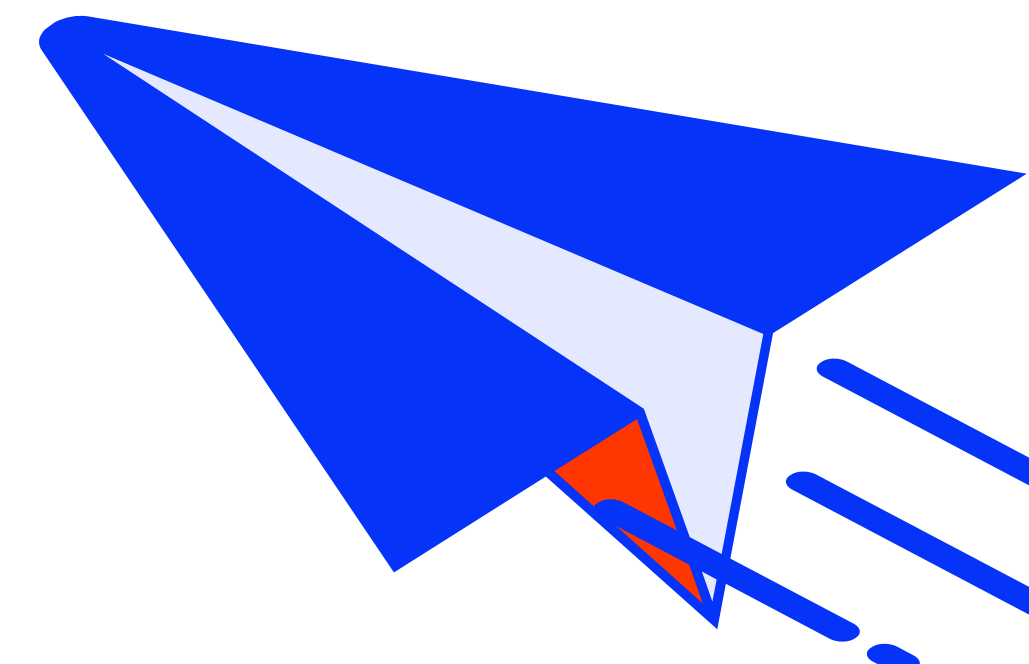
Make sure to leave room for your Job Title. Your job title will be automatically centred by default, unless you specify left or right alignment



Save and export your Job Share Design

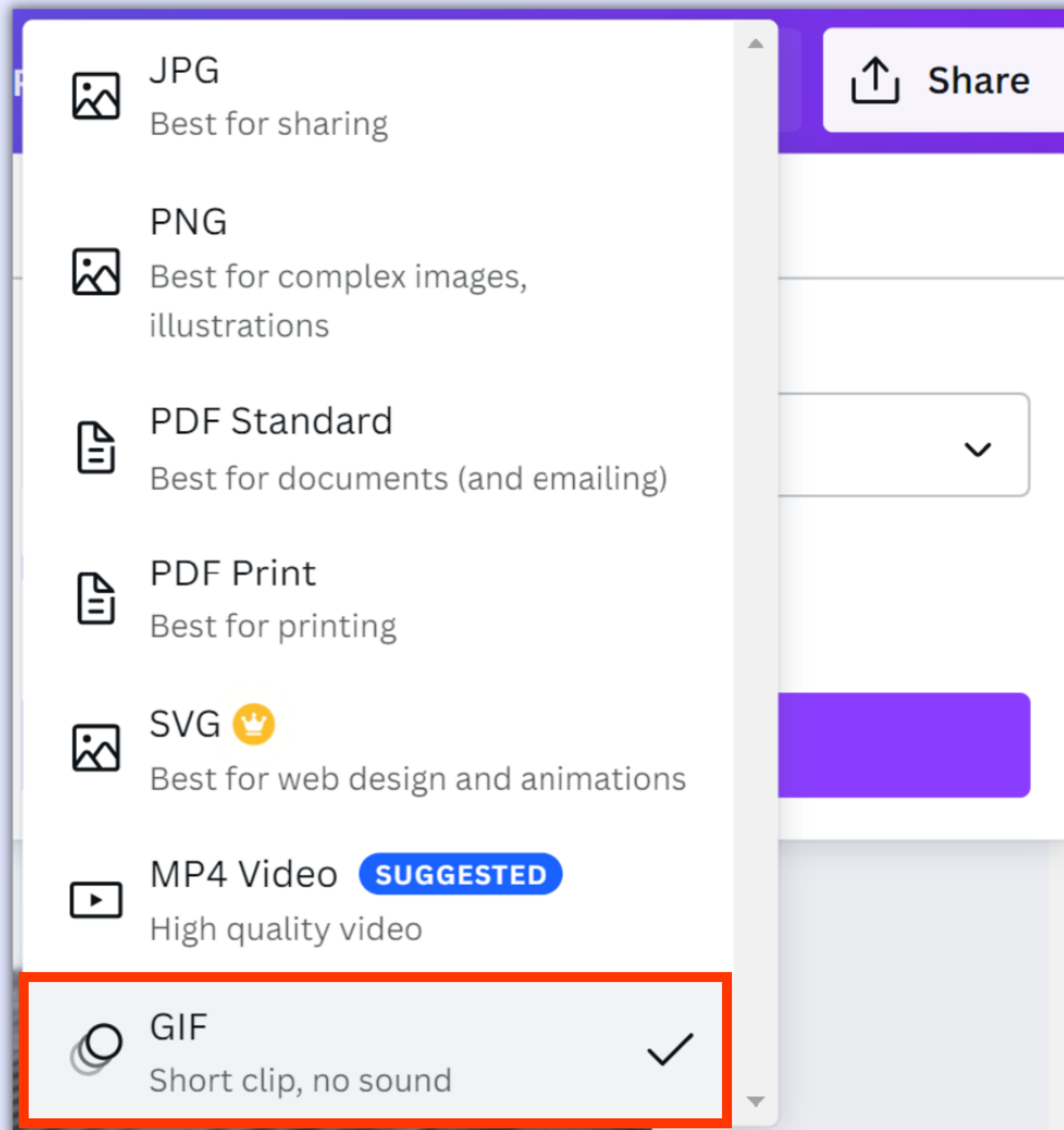
Once you have finished your design, click Share and then click Download

The screenshot shows a software interface with a purple header bar. On the right side of the header, there is a 'Share' button with an upward arrow icon, which is highlighted with a red box. Below the header, the main content area is titled 'Share this design'. It includes a text input field for adding people, groups, or teams. Below that, there is a green circle with 'EJ' and a plus sign. Underneath, it says 'Link sharing restricted' with two dropdown menus: 'Only people added' and 'Can access'. A large purple button labeled 'Copy link' is positioned below the dropdowns. At the bottom of the main content area, there is a list of options, each with an icon and a right-pointing chevron. The 'Download' option, which has a downward arrow icon, is highlighted with a red box. Other options in the list include 'Template link', 'Present', 'Present and record', 'View-only link', 'Share on social', 'Print your design', and 'More'.



Save and export your Job Share Design

Click the File type drop-down, select GIF, then click Download



How To Make a Job Share Design GIF in Canva

www.paiger.co

Paiger